



## Atlantis, The Palm Rooms & Suites



The resort's 1,544 rooms and suites recently benefitted from an extensive renovation to bring a fantastically fresh look and feel to each and every room. Accommodation ranges from Ocean and Palm Beach rooms (45 square metres) to a series of larger suites, sumptuously appointed with walk-in wardrobes, dressing areas and jetted tubs. Interiors are fashioned in an elegantly understated contemporary décor of earth tones, while vibrant splashes of colour bring the ocean indoors. Decadent bathrooms outfitted with marble floors, granite vanities, rain showers and twin vessel sinks provide guests with a luxurious oasis for relaxation.

## TOPLINE FACTS

- **1544** rooms and suites spanning two towers: East Tower and West Tower
- **1051** standard rooms: Ocean and Palm View
  - Ocean View: 554/45sqm
  - Palm View: 497/45sqm
- **326** Imperial Club rooms: Imperial King and Queen
  - Imperial Club: 326/45sqm
- **161** suites: Terrace, Skyline and Regal
  - Terrace Suite: 31/94sqm
  - Family Terrace Suite: 52/141sqm
  - Skyline Suite: 19/101sqm
  - Family Skyline Suite: 23/101sqm
  - Regal Suite: 9/164sqm
  - Family Regal Suite: 27/211sqm
- **6 Signature Suites:** Underwater, Grand Atlantis, Presidential
  - Underwater Suite: 2/165sqm
  - Grand Atlantis Suite: 2/429sqm
  - Presidential Suite: 2/220sq
- **31** accessible rooms
- **Prices:** Stays start from AED 1,160 +++ per night
- **Visit:** <https://www.atlantis.com/dubai/rooms-and-suites>
- **Imagery:** Please click [here](#)
- **Social media:** @atlantisthepalm



## ROOMS

*Ocean view rooms start at AED 1,160 +++ per night. All stays include daily complimentary entry to Aquaventure Waterpark and The Lost Chambers Aquarium, complimentary access to AWAKEN Fitness, preferential rates on marine animal experiences, and one-time entry to the Atlantis Explorers Club and The Zone*

### OCEAN VIEW KING AND QUEEN ROOMS

- *Count: 554*
- *45m<sup>2</sup> + balcony*

- *King: Sleeps up to 2 adults and 1 infant*
- *Queen: Sleeps up to 2 adults and 2 children (or 3 adults)*
- *Room highlights include balcony, hairdryer, iron, minibar, 24-hour room service, oversized freestanding bath, walk in shower, Samsung smart TV (49 inch), Nespresso coffee machine, bathrobe, and slippers.*

With contemporary designs celebrating the majesty of the sea, the spacious and sleek Ocean Room offers incredible views of the Arabian Sea.

## PALM VIEW KING AND QUEEN ROOMS

- *Count: 497*
- *45m<sup>2</sup> + balcony*
- *King: Sleeps up to 2 adults and 1 infant*
- *Queen: Sleeps up to 2 adults and 2 children (or 3 adults)*
- *Room highlights include balcony, hairdryer, iron, minibar, 24-hour room service, oversized freestanding bath, walk in shower, Samsung smart TV (49 inch), Nespresso coffee machine, bathrobe and slippers.*

Experience views of the glittering Dubai skyline and Palm Island at our contemporary, sleek and spacious rooms inspired by the ocean.



## IMPERIAL CLUB ROOMS

*Imperial Club rooms start at AED 1,617+++ per night. Imperial Club benefits include daily access to the Imperial Club Lounge inclusive of daily continental breakfast, afternoon tea and evening canapes, dedicated check-in and check-out area, access to the private Imperial Club Beach and AED 50 redeemable gaming credit at Wavehouse. All stays include daily complimentary entry to Aquaventure Waterpark and The Lost Chambers Aquarium, complimentary access to AWAKEN Fitness, preferential rates on marine animal experiences, and daily entry to the Atlantis Explorers Club and The Zone*

### IMPERIAL CLUB ROOM

- *Count: 326*

- 45m<sup>2</sup>-47m<sup>2</sup>with balcony
- King: Sleeps up to 2 adults and 1 infant
- Queen: Sleeps up to 2 adults and 2 children (or 3 adults)
- Room highlights include balcony, hairdryer, iron, minibar, 24-hour room service, oversized freestanding bath, walk in shower, Samsung smart TV (49 inch), Nespresso coffee machine, bathrobe and slippers.

Located on the 11th-15th floors of the East Tower, Imperial Club King and Queen rooms offer partial or full view of Palm Island or the Arabian Sea.. With contemporary and sleek designs inspired by the ocean, Imperial Club rooms offer spacious comfort at 45-47sqm, including a large bathroom with walk in shower and a separate bath, a 49-inch flat screen television, in-room integrated technology and mini bar.



## SUITES

Suites start at AED 2,704+++ per night. Suite benefits include return transfers to and from Dubai airports, in-suite check-in, complimentary Room Service, daily access to the Imperial Club Lounge, as well as additional club benefits. All stays include daily complimentary entry to Aquaventure Waterpark and The Lost Chambers Aquarium, complimentary access to AWAKEN Fitness, preferential rates on marine animal experiences, and daily entry to the Atlantis Explorers Club and The Zone

### TERRACE SUITE

- Count: 31
- 94m<sup>2</sup>with balcony
- 1 King bed
- Sleeps up to 2 adults + 2 children below 14 years of age + 1 infant cot or 3 adults
- Room highlights include terrace with dining area and sun loungers, spacious living area, master bedroom, cloakroom, hairdryer, iron, minibar, 24-hour room service, oversized freestanding bath, walk in shower, Samsung smart TV (49 inch), Nespresso coffee machine, bathrobe and slippers

### FAMILY TERRACE SUITE

- Count: 52
- 141m<sup>2</sup> with balcony
- 1 King bed and 2 Queen Beds



- *Sleeps up to 6 adults + 1 infant cot*
- *Room highlights include terrace with dining area and sun loungers, spacious living area, master bedroom, cloakroom, hairdryer, iron, minibar, 24-hour room service, oversized freestanding bath, walk in shower, Samsung smart TV (49 inch), Nespresso coffee machine, bathrobe and slippers*

Bask in uninterrupted views of the Arabian Gulf and Palm Island from the Terrace Suite. Enjoy a quiet moment with your loved ones overlooking panoramic views of the Arabian sunset or dine alfresco on the largest terrace from our hotel suites range. With contemporary style inspired by the ocean, both the one-bedroom Terrace Suite and two-bedroom Family Suite boast spacious and stylish lounge and dining areas. Each Terrace Suite offers a grand ensuite bathroom with freestanding bathtub, walk-in shower and his and hers vanity sinks.



## SKYLINE SUITE

- *Count: 19*
- *101m<sup>2</sup>with balcony*
- *1 King bed*
- *Sleeps up to 2 adults + 2 children below 14 years of age + 1 infant cot or 3 adults*
- *Room highlights include terrace with dining area, spacious living area with four-seater dining table, master bedroom, private pantry, cloakroom, hairdryer, iron, minibar, 24-hour room service, oversized freestanding bath, walk in shower, Samsung smart TV (49 inch), Nespresso coffee machine, bathrobe and slippers*

## FAMILY SKYLINE SUITE

- *Count: 23*
- *148m<sup>2</sup>with balcony*
- *1 King bed and 2 Queen Beds*
- *Sleeps up to 6 adults + 1 infant cot*
- *Room highlights include terrace with dining area, spacious living area with four-seater dining table, master bedroom, private pantry, cloakroom, hairdryer, iron, minibar, 24-hour room service, oversized freestanding bath, walk in shower, Samsung smart TV (49 inch), Nespresso coffee machine, bathrobe and slippers*

With sleek decor and a spacious dining and living area, the Skyline Suite is ideal for families or couples looking for that something extra. At 101sqm – 148sqm, with a kitchenette and separate workspace, the Skyline Suite is a home away from home and the ideal spot for business and leisure. The well-appointed bathroom features a freestanding oval soaking tub, separate walk-in shower and his and hers vanity sinks. Experience breathtaking views of the Arabian Sea or glittering Dubai skyline from the Skyline Suite's terrace.



## REGAL SUITE

- *Count: 9*
- *164m<sup>2</sup> with balcony*
- *1 King bed*
- *Sleeps up to 2 adults + 2 children below 14 years of age + 1 infant cot or 3 adults*
- *Room highlights include terrace, spacious living and dining area, master bedroom with majlis, office area with partition, private pantry, cloakroom, hairdryer, iron, minibar, 24-hour room service, oversized freestanding bath, walk in shower, Samsung smart TV (49 inch), Nespresso coffee machine, bathrobe and slippers*

## FAMILY REGAL SUITE

- *Count: 27*
- *211m<sup>2</sup> with balcony*
- *1 King bed and 2 Queen Beds*
- *Sleeps up to 6 adults + 1 infant cot*
- *Room highlights include terrace, spacious living and dining area, master bedroom with majlis, office area with partition, private pantry, cloakroom, hairdryer, iron, minibar, 24-hour room service, oversized freestanding bath, walk in shower, Samsung smart TV (49 inch), Nespresso coffee machine, bathrobe and slippers*

The lavish 164sqm – 211sqm Regal Suite's plush living areas, sweeping balcony and opulent master bedroom with its own majlis lounge offers the full royal experience for you and your family. Beautifully furnished with warm Arabian colours, each Regal Suite has doors separating the bedroom from the large living room, providing absolute privacy during your stay. Catch mesmerising sunsets across the Dubai skyline and Arabian Sea on the Regal Suite's terraces. The palatial ensuite bathroom offers marble flooring, a freestanding oval bathtub and chaise lounge, inviting you to unwind and let go of your everyday.



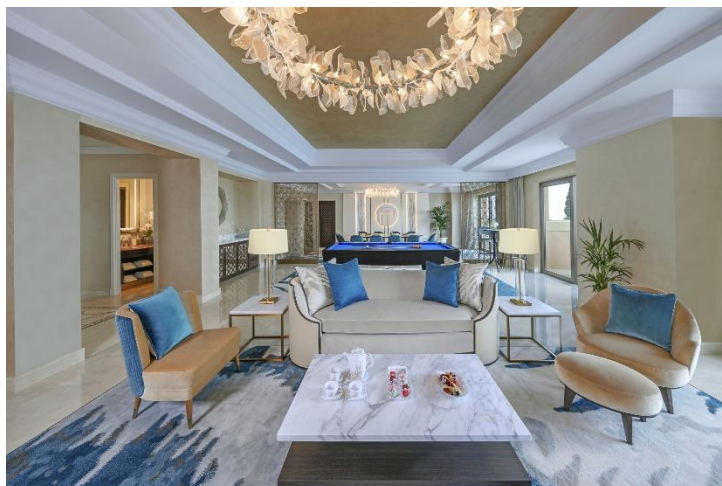
## SIGNATURE SUITES

*Signature Suites start at AED 12,785+++ per night. Signature Suite benefits include a 24-hour butler, priority reservations, breakfast in bed, and all Suite, Imperial Club and Room benefits.*

## GRAND ATLANTIS SUITE

- Count: 2
- 429m<sup>2</sup> with balcony
- Two bedrooms and three bathrooms (two King Rooms)
- Sleeps up to 4 adults + 2 children below 14 years of age , or 5 adults, or 5 adults + 1 child below 14 years of age
- Room highlights include corridor entrance with fountains, 360 views, butler service, Frette linen, 22 carat gold amenities, jacuzzi, outdoor hot tub, complimentary adjoining room

Spanning 429 square metres, the two Grand Atlantis Suites form the dramatic crowning glory of Atlantis. Each has a commanding view over Palm Island and the Arabian Gulf, and a grand sun terrace that spans three sides of the suite complete with private jacuzzi. Guests are welcomed with a beautiful marine-themed fountain at the entry way, leading to an opulent living space decorated in elegant gold tones and sumptuous furnishings, including a dining table accommodating 10 guests. The two-bedroom suite features resident areas that are discreetly designed, with his and her ensuite bathrooms and dressing rooms off the bedrooms, including a majestically oversized four poster bed in the master bedroom.



## Presidential Suite

- *Count: 2*
- *220 m<sup>2</sup> with balcony*
- *Two bedrooms and three bathrooms (one King Room and one Queen Room)*
- *Sleeps up to 2 adults + 2 children below 14 years of age or 3 adults*
- *Room highlights include butler service, Frette linen, 22 carat gold amenities, pool table, complimentary adjoining room*

The resort's two Presidential Suites are a popular choice for large families choosing to stay in Dubai in ultimate luxury. Each 220 square metre suite features interconnecting rooms, a dining table for 10, private kitchen, as well as an endless elegant couch that wraps around the room, offset by a bespoke chandelier in the centre of the lounge. This is a luxury choice for large families wanting to spend time together in an exotic setting.



## Underwater Suite

- *Count: 2*
- *165 m<sup>2</sup>*
- *One bedroom and three bathrooms (one King Room)*
- *Sleeps up to 2 adults + 2 children below 14 years of age, or 3 adults*
- *Room highlights include butler service, Frette linen, 22 carat gold amenities, complimentary adjoining room*

The renowned Underwater Suites at Atlantis are a popular option for honeymooners and celebrities alike seeking a once in a lifetime experience. The floor-to-ceiling views from the master bedroom directly into The Ambassador Lagoon aquarium create an illusion of being beneath the sea. Three stories high and 165 square metres, the suite is intimate, elegant and unforgettable.